

# DISASTER PREPAREDNESS PLAN FOR THE OWNERS/RESIDENTS OF TANGERINE WOODS OWNERS ASSOCIATION

Revised and Updated 2012

The purpose of this disaster plan is to outline in detail steps to be taken by residents in Tangerine Woods (T.W.) in the event of a natural disaster such as hurricanes, tornadoes, floods, etc.

Disasters do not respect geographic location or economic status. Their effects can last for years; however, predisaster readiness coupled with a well orchestrated and executed disaster plan will hopefully minimize damage, promote a speedy recovery but most of all it may save lives.

Hopefully you will never need to use the information contained in this document. But if you do, it may save your life and minimize the damage to your property and belongings. The Disaster Preparedness Plan was prepared for you and your T.W. neighbors by the Tangerine Woods Owners Association Board of Directors.

**NOTE: We have been advised by our Insurance Carrier and our legal counsel that the T.W. Clubhouse is not to be used as a “shelter”. The doors will be locked upon a hurricane warning and/or evacuation order.**

## 1. WEATHER TERMS USED FOR HURRICANE SEASON

Part of staying informed about weather conditions is by understanding the different terms used by weather forecasters. The following are some of those common terms. Please familiarize yourself with the meaning of these terms.

- Special Advisory – Information disseminated when there is a significant change in storm related weather conditions.
- Gale Warnings – Means sustained winds of 35 to 54 miles per hour.
- Hurricane Watch – There is a threat of hurricane conditions within 24 to 36 hours.
- Hurricane Warnings – A hurricane is expected to strike within 24 hours or less with sustaining winds of 74 miles per hour or more and dangerously high waters.

Hurricanes are classified into five (5) categories according to wind velocity:

Category 1 – Is the mildest with winds from 74 to 95 m.p.h.

Category 5 – Is the strongest with winds above 155 m.p.h.

The hurricane season lasts from June 1<sup>st</sup> to November 30<sup>th</sup> with August, September and October are the peak months.

**IT IS IMPORTANT TO OBTAIN A COPY OF THE SPECIAL “HURRICANE SURVIVAL GUIDES” IN OUR LOCAL NEWSPAPERS AND WATCH LOCAL TV NEWS (Ch 7 or Ch 6 on Comcast in Sarasota County) TO TRACK THE STORM.**

2. **EMERGENCY PREPAREDNESS**

**Hurricane “WATCH” Preparations** – When a hurricane watch is announced please take the following actions to secure your home.

- Turn freezer and refrigerator to the coldest settings.
- Remove all loose articles outside your home, i.e. hanging plants, furniture, anything that becomes airborne with high winds from your porches and carports. Place them in your utility shed, in your home or under your home.
- Remove and store all loose plants and debris from your yard, i.e. garden hoses, bird feeders, bird baths, plant pots, statues etc. Place them in your utility shed, in your home or under your home.
- Close and lock all windows. Lower and secure all storm shutters.
- Board up all large unprotected windows.

3. **PREPARE FOR EVACUATION (STILL UNDER A HURRICANE WATCH)**

- Fill your vehicle with gasoline, check oil, battery, radiator coolant and check your tire pressures (including the spare).
- Make sure your portable radio and flashlights have fresh batteries as well as extras.
- Check First Aid Kit supplies
- Check prescription medications, have a two (2) week supply. Check personal care items.
- Locate and store the following items in a dry container or a bank safe deposit box:
  - Insurance policies
  - Mortgage documents
  - Bank Statements
  - Identification (birth certificates, passports, etc.)
  - Titles to home, car, boat, etc.
  - Wills
- Obtain cash/coins from your bank for evacuation purposes.
- Put together an evacuation kit. The kit should include the following items:
  - First Aid Kit
  - Personal items
  - Light weight folding chairs
  - Water – 1 gallon, per person for 3-7 days
  - Manual can opener
  - Camera
  - Entertainment (books, puzzles, stationary)
  - Blankets/pillows
  - Extra clothing
  - Cash-coins-credit cards
  - Non-perishable food/snacks
  - Sturdy shoes

**If you are not evacuating to a shelter, make reservations at hotels/motels of your choice. Check by phone the availability of local shelters, if you are going to use them rather than hotels/motels.**

4. **SPECIAL NEEDS/HANDICAPPED OWNERS-HURRICANE WARNING** – If you are disabled/handicapped and have not signed up for this service already, call **Emergency Management Infirm Registry now at (941) 861-5000 to register your name with them.**

If a Hurricane watch has been upgraded to a Hurricane Warning. Those T.W. residents who are disabled and/or handicapped, who signed up for Sarasota County Evacuation Services, will have already left the community. Their evacuation will begin early in the “watch” period and “warning period”.

5. **NOTICE OF MANDATORY EVACUATION** -- You will be notified of **MANDATORY EVACUATION** by notices on your TV, emergency telephone notification or Law Enforcement going thru the park. **ONCE THE MANDATORY EVACUATION ORDER IS GIVEN, DO NOT ATTEMPT TO STAY IN YOUR HOME AND "RIDE IT OUT"**. Remember those images on television in past years of some of the victims of Hurricane Charley, Frances, Ivan, Jeanne, Katrina and Wilma who decided to **"ride it out"**.
  
6. **TANGERINE WOODS HURRICANE WARNING EVACUATION PROCEDURE THIS IS VERY IMPORTANT!**
  - Notify family or friends of your evacuation plans and destination. (Name of the shelter or hotel/motel along with their telephone number).
  - Eat something before evacuating to a shelter. Bring with you some sandwiches, canned/bottles beverage, snacks, etc. as emergency rations will not likely be immediately available at the shelter. Remember, no refrigeration is supplied.
  - Shut off water to your home at the curb box (No Englewood Water Dept. permission is needed). Shut off all electric at the main breakers in your breaker box.
  - Load survival kit into vehicle and **leave**. Stop and check out at the T.W. office if it is open. Let the office personnel know where you are going, along with the telephone number there. Also, if you have a cell phone, give them that number in the event they need to call you.

**PUBLIC SHELTER LOCATIONS**

(see attached map)

**PET FRIENDLY**

**33-North Port High School**-6400 West Price Blvd., North Port, FL

**34-Heron Creek Middle School**-6501 W. Price Blvd., North Port, FL

**36-Woodland Middle School**-2700 Panacea Blvd., North Port, FL

**NON-PET SHELTERS**

**32-Glenallen Elementary School**-7050 Glenallen Blvd., North Port, FL

**35-Toledo Blade Elementary School**-1201 Geranium Ave., North Port, FL

**37-Taylor Ranch Elementary School**-2500 Taylor Ranch Trail, Venice, FL

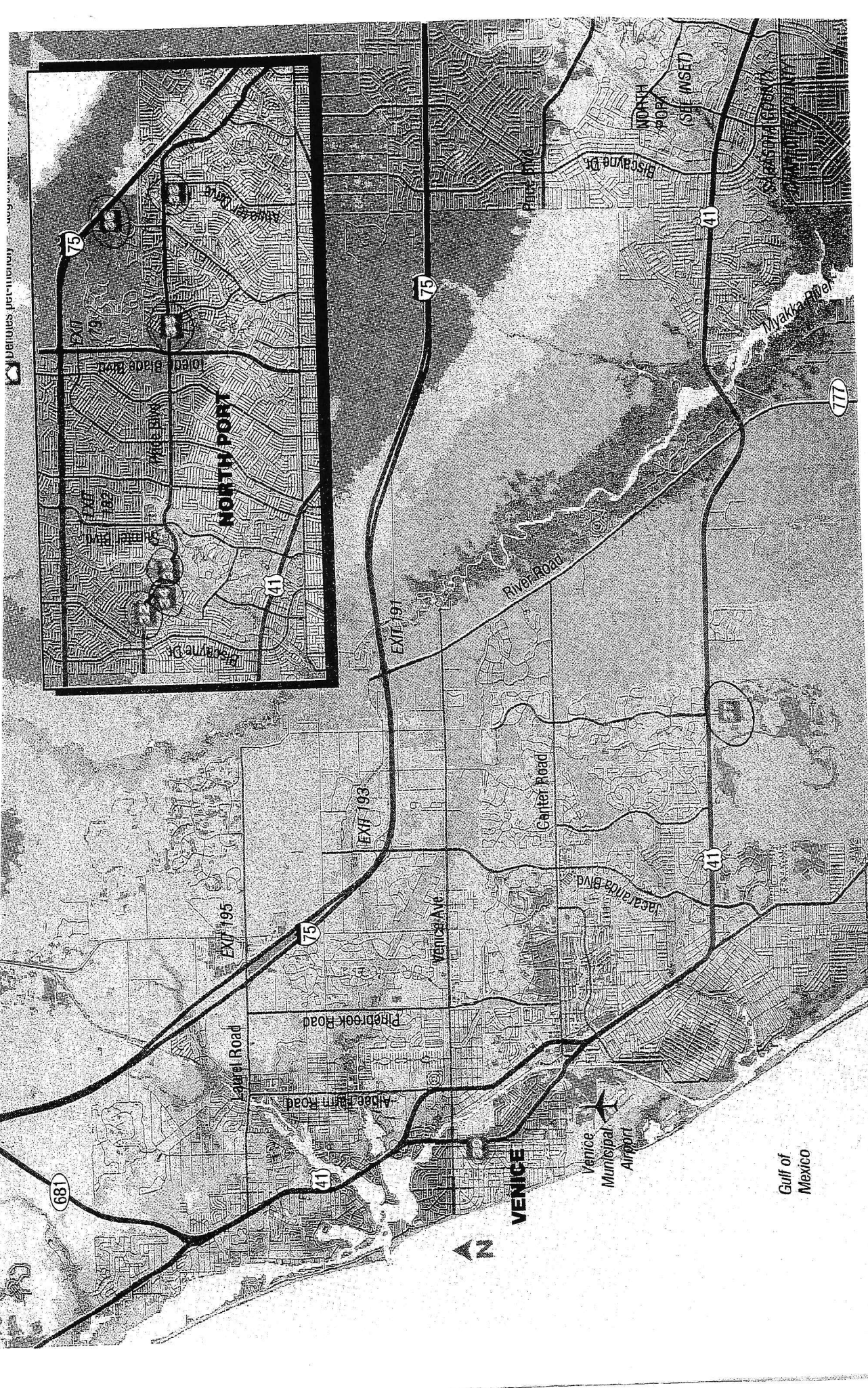
**38-Atwater Elementary School**-4701 Huntsville Ave., North Port, FL

**SMOKING, ALCOHOLIC BEVERAGES, OR WEAPONS ARE NOT ALLOWED  
IN PUBLIC SHELTERS. NO PETS IN NON-PET SHELTERS.**

7. **THE AFTERMATH OF THE HURRICANE**
  - Do not attempt to return to your home until authorities say it is safe to do so. This is extremely important.
  - Make the T.W. office aware when you do return to your home.

- Be aware of downed or loose power lines. Report them to FPL (power company), police or fire department.
- Enter your home with caution. Open windows and doors to ventilate or dry out your home. Do not use candles or open flames indoors. Use a flashlight to inspect for damage.
- If your home has gas, check for gas leaks. If you smell or hear a blowing or hissing noise quickly leave the building and leave the doors open. Call the gas company.
- Look for electrical system damage. If you see sparks or frayed wires, turn off electricity at the main fuse box. If you have to step in water to reach the electric box, contact an electrician for advice.
- Check for sewage and water line damage. If you suspect damage, call the water company. Do not drink or prepare food with tap water until you have been notified that it is safe to do so.
- Take photos of any damage, both the house and its contents for any insurance claims.
- Contact your insurance agent
- Within hours of any disaster, the affected community will be besieged by companies and individuals looking for work and/or offering disaster recovery services. This group will consist of qualified professionals, ranging from public adjusters to companies specializing in disaster recovery –the larger of these companies will arrive decked out in color coordinated uniforms, large debris removing equipment and even helicopters. Interspersed among the new arrivals will be the CON MEN and PROFITEERS who prey upon the misfortune of others. While it is very tempting to sign the first contract stuck in your face, when confronted with what initially will appear to be an insurmountable task of reconstruction, experience has shown that these quick solutions are formulas for disaster of a greater magnitude than those already suffered. No greater application exists for the old adage that “Haste makes waste” than in these situations. The best advice is to just say NO and stick to your disaster plan which, hopefully, will include a plan that anticipates the five (5) phases of reconstruction.
- Project planning/scheduling
- Construction bidding
- Contract negotiation
- Construction/rehabilitation
- Project completion/close out
- These are intervening steps you should take which may require contracts of short duration and for specific purposes.
- Even these contracts should be reviewed to insure that proper precautions are taken.

Revised & updated 8/31/2012



Denotes perturbation

Venice Municipal Airport

Gulf of Mexico

VENICE

NORTH PORT

75

75

41

777

681

41

75

41

EXIT 195

EXIT 193

EXIT 191

75

NORTH PORT (SEE INSET)

Biscayne Dr

River Road

Carlier Road

Isabella Blvd

Venice Ave

Laurel Road

Pinedrop Road

Abbe Point Road

North Pine Blvd

North Pine Dr

Wakulla River

Sarasota River

