

## REQUEST FOR Money FROM TWERC FOR CARD ROOM CABINETS

We are submitting a proposal with 3 options for cabinets. The plans contain advantages, disadvantages and cost for each option. There will be additional costs for assembly of closet and to purchase locks for cupboards that need them.

We are sending a proposal to Lazy Daze because they will have a lot of work and would like to get their opinion.

In the next couple weeks, we will also send the info to Buildings and Ground and the TW Board.

Any questions contact,

Denise Chard

Sherry Sarine

## Card Room Cabinetry

- Specifications: Total Card Room Wall length is 248" (20'6") Ceiling Height on Low/short end is 96"
- Disability/Mobility Equipment Closet: approx. 4' X 3'6" \*, Angled front, with 28" door (slab or bifold)
- Available space for TWERC cabinetry minus closet: 16'5" \*
- Material Cost to frame Closet TBD (Sherry has 28" slab door to donate – needs fresh paint)

\* Verify measurements before ordering cabinets.

### Possible Cabinet Sources:

<b>Units Needed</b>	<b>Source</b>	<b>Size</b>	<b>Cost Per Unit</b>
11	Home Depot	18 X 24 X 90	270.00
8	Ikea	24 x 24 x 90 <small>Note wider cabinet</small>	427.00
11	Lily Ann Cabinets	18 x 24 x 90	639.14

### **Cabinet Locks–**

*NOTE: Locks for all cabinets are additional & installation will need to be done by Lazy Daze on site.*

### **Video**

[https://www.google.com/search?q=How+to+install+cabinet+locks+of+a+utility+cabinet&rlz=1C1CHBF\\_enUS840US840&oq=How+to+install+cabinet+locks+of+a+utility+cabinet&gs\\_lcrp=EgZiaHJvbWUyBggAEEUYOTIHCAEQIRigATIHCAIQIRigAdIBCTEzNjU1ajBqN6gCALACAA&sourceid=chrome&ie=UTF-8#fpstate=ive&vld=cid:cc71701f,vid:aYixW3Yossl,st:0](https://www.google.com/search?q=How+to+install+cabinet+locks+of+a+utility+cabinet&rlz=1C1CHBF_enUS840US840&oq=How+to+install+cabinet+locks+of+a+utility+cabinet&gs_lcrp=EgZiaHJvbWUyBggAEEUYOTIHCAEQIRigATIHCAIQIRigAdIBCTEzNjU1ajBqN6gCALACAA&sourceid=chrome&ie=UTF-8#fpstate=ive&vld=cid:cc71701f,vid:aYixW3Yossl,st:0)

## **Utility Cabinetry Options**

→ **Option 1 Source: Home Depot -18W X 24D X 90H**

<https://www.homedepot.com/p/Hampton-Bay-18-in-W-x-24-in-D-x-90-in-H-Assembled-Pantry-Kitchen-Cabinet-in-Unfinished-with-Recessed-Panel-KP1890-UF/302970474>

**Add-on costs:** Semi-gloss paint; P/U or Delivery-Costs TBD

**Advantages:** Low unit cost; Come fully assembled

**Disadvantages:** Interior, Exterior + all shelves must be painted; additional cost of paint; man hours to paint

\*\*\*\*\*

→ **Option 2 Source: IKEA – 24W X 24D X 90H – Tampa, FL.**

<https://www.ikea.com/us/en/p/sektion-high-cabinet-with-shelves-2-doors-white-askersund-light-ash-effect-s89467151/#content>

**Add-on costs:** Pick up in Tampa OR delivery cost via trucking firm; Misc. component parts needed for installation

**Advantages:** Fully finished. Box: White melamine inside & out; Doors: Lt. Ash melamine door exterior; Other color options available.

**Disadvantages:** Assembly required, Higher unit cost than Home Depot unfinished option.

\*\*\*\*\*

→ **Option 3 Source: Lily Ann – Cabinet company out of Largo, FL.**

<https://www.lilyanncabinets.com/pantry-and-oven-cabinets-utility-cabinet-18-x-90-colorado-white-shaker.html>

**Add-on costs:** 0, None related to the cabinets themselves.

**Advantages:** Superior quality; solid birch wood Ext. w/factory-finished paint; Interior: Natural-color Wood Veneer, UV Coated. 7-10 Day delivery to our site at no charge.

**Disadvantages:** Assembly required, Higher unit cost than Home Depot unfinished option.

# Card Room Cabinetry

All units have Upper & lower doors.

20'-9"

16'-5 1/2"

16'

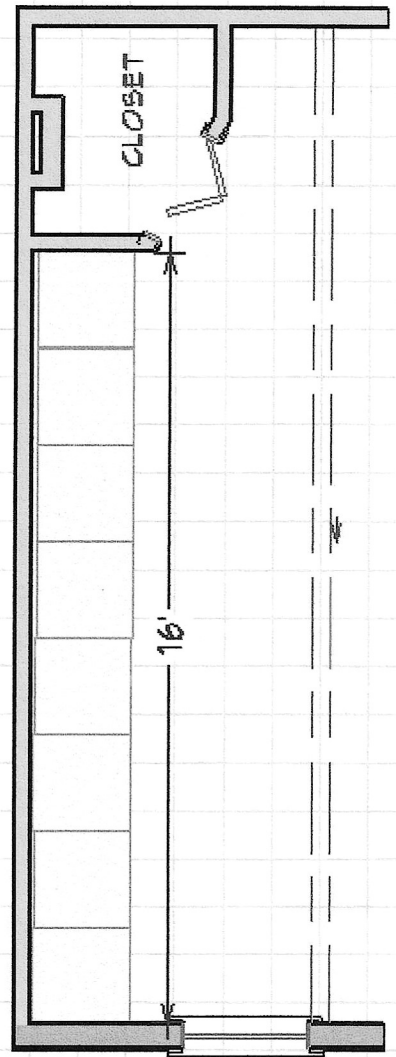
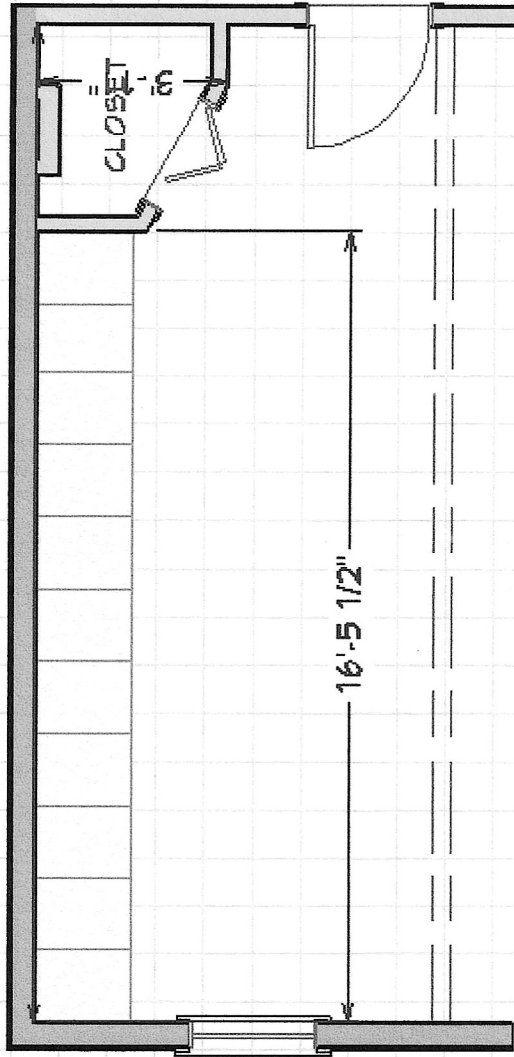
18W X 24 D X 90 H

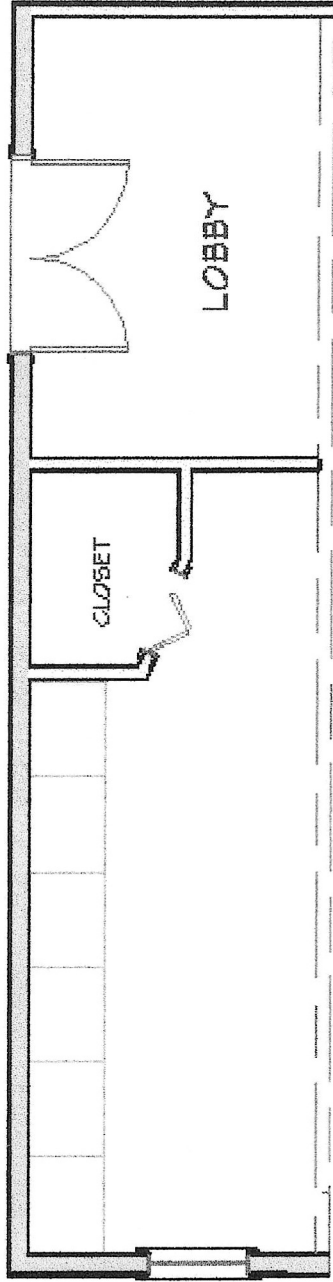
24 W X 24 D X 90 H

Home Depot

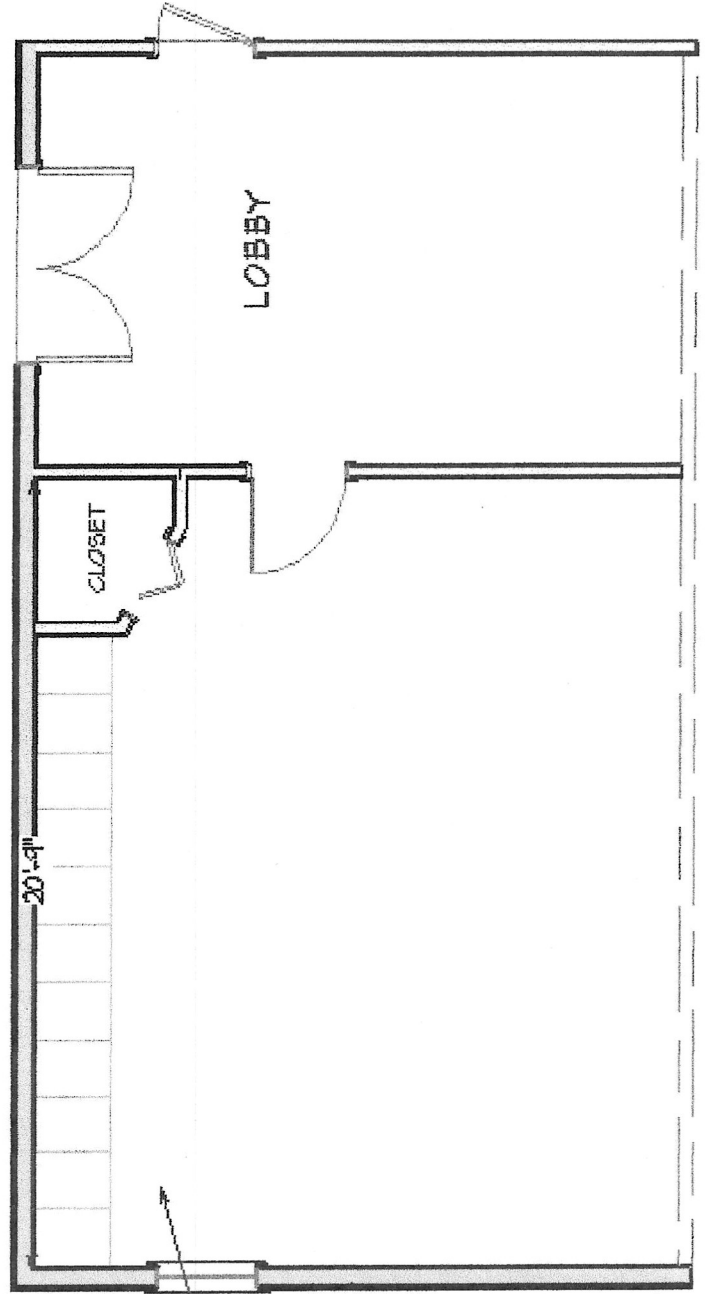
Lilly Ann

Ikea





Lilly Ann Cabinetry  
 90 x 84 x 24D  
 Center Opening, Double Doors  
 (Upper & Lower Compartments)



Home Depot  
 90 x 18 x 24